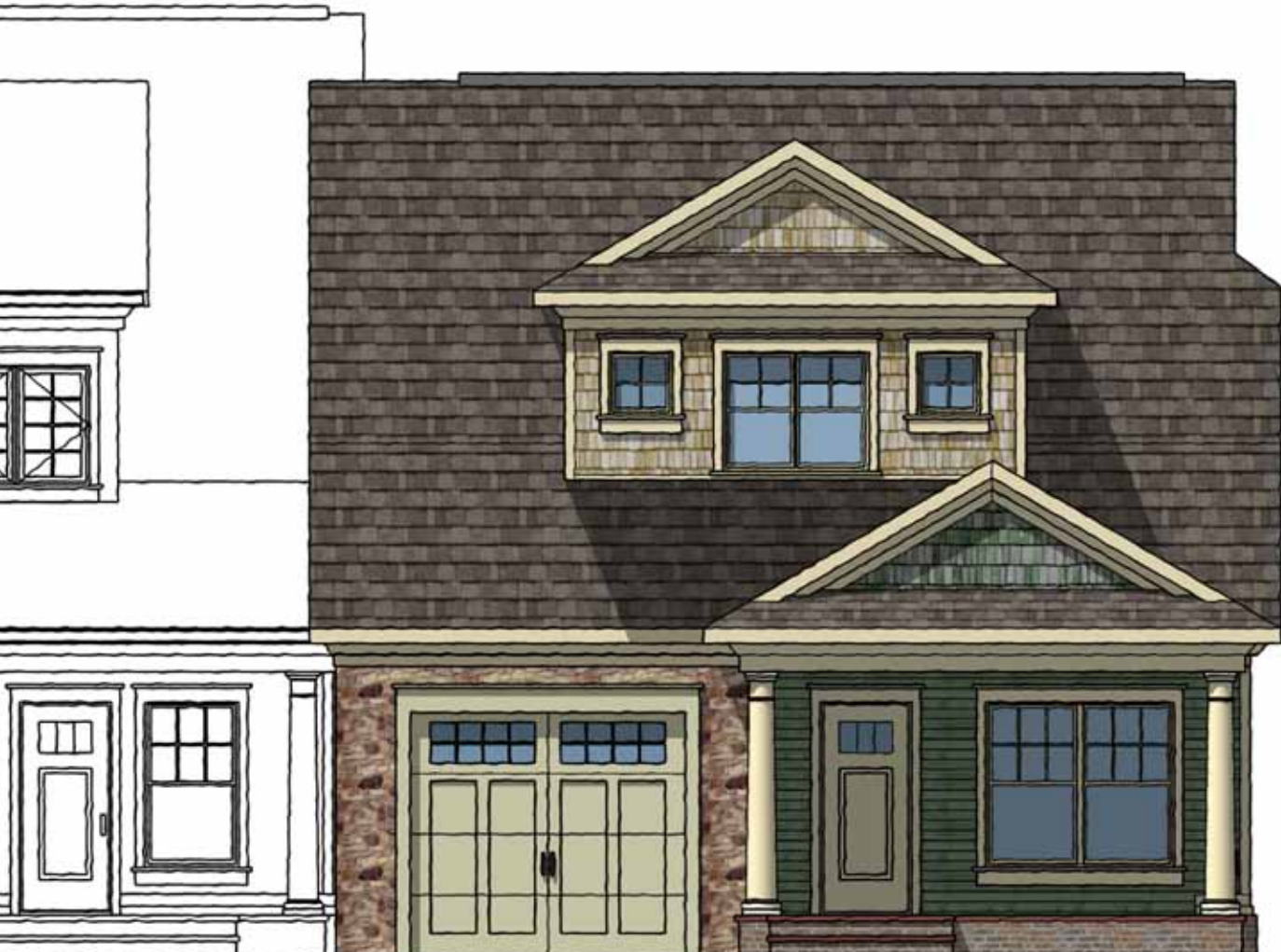


THE YORK II

ATTACHED GARAGE



*Coleman's
Crossing*

END UNIT

1,854 SQUARE FEET (1,500 DOWN / 354 UP)

3 BEDROOMS

3 BATHROOMS

BRICK OR STONE ACCENTED EXTERIOR WALLS

COVERED FRONT & REAR PORCH

ATTACHED GARAGE



COMFORTABLE DOWNSTAIRS LIVING
PRIVATE UPSTAIRS LOFT AND BEDROOM
OPEN FLOOR PLAN FOR ENTERTAINING
TWO MASTER BEDROOM SUITES
LARGE KITCHEN W/ BREAKFAST BAR



REAR ELEVATION



SIDE ELEVATION