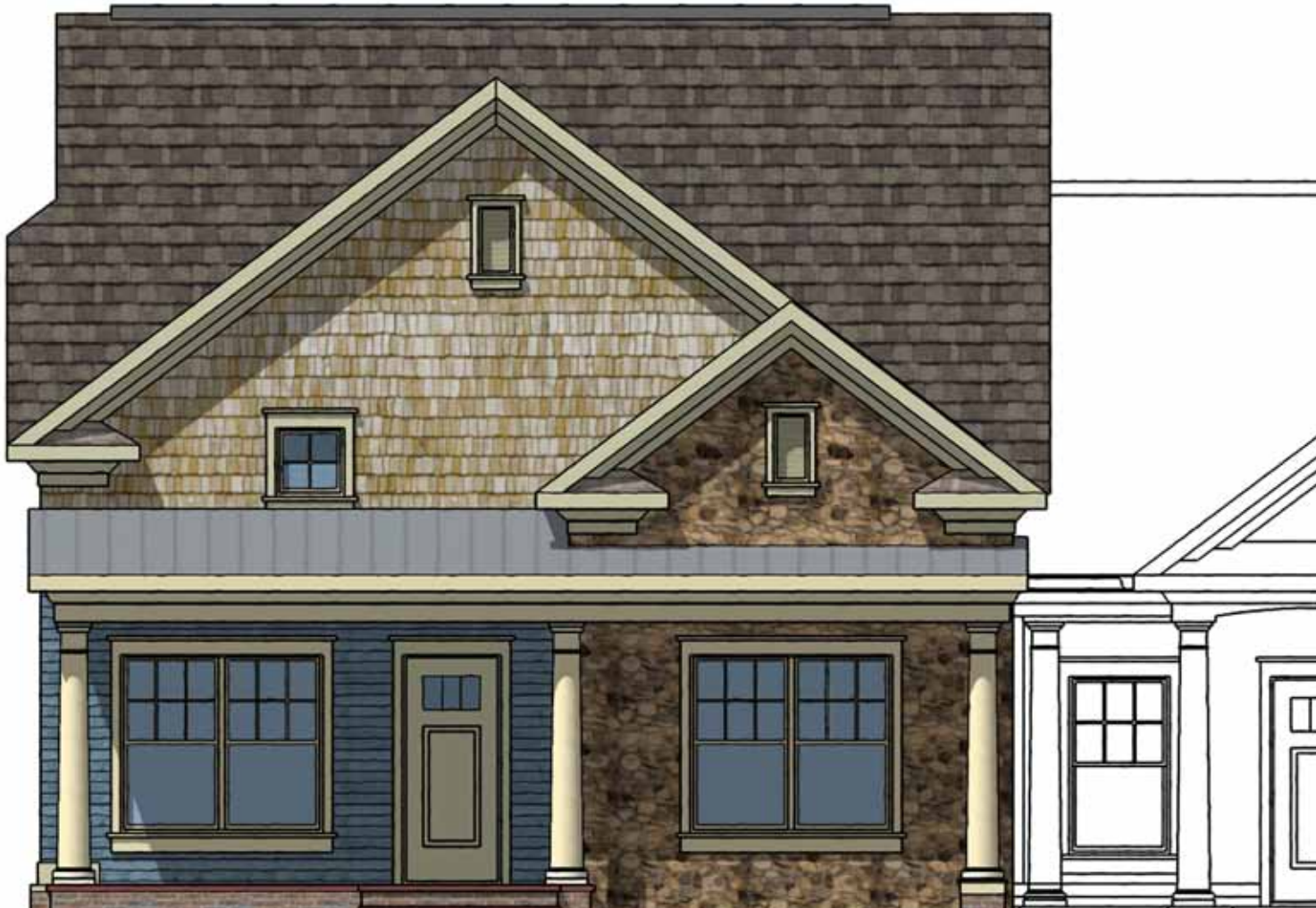


THE YORK I

DETACHED GARAGE



*Coleman's
Crossing*

END UNIT

1,784 SQUARE FEET

3 BEDROOMS

3 BATHROOMS

COVERED FRONT & REAR PORCH

DETACHED GARAGE

THE YORK I DETACHED GARAGE



- COMFORTABLE ONE-FLOOR LIVING
- OPEN FLOOR PLAN FOR ENTERTAINING
- TWO MASTER BEDROOM SUITES
- CATHEDRAL CEILINGS
- LARGE KITCHEN W/ BREAKFAST BAR



REAR ELEVATION



SIDE ELEVATION